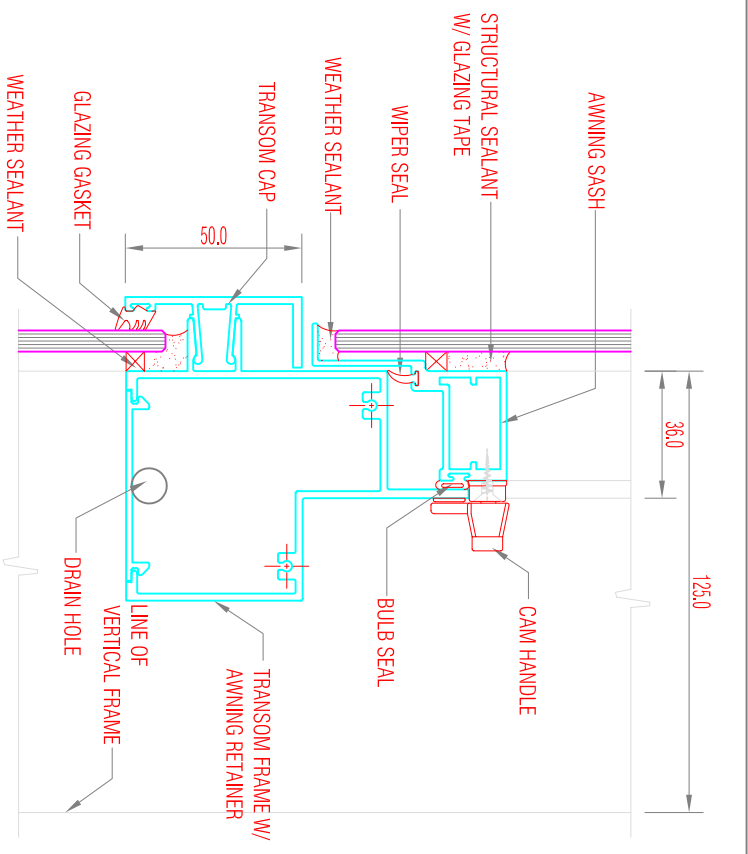
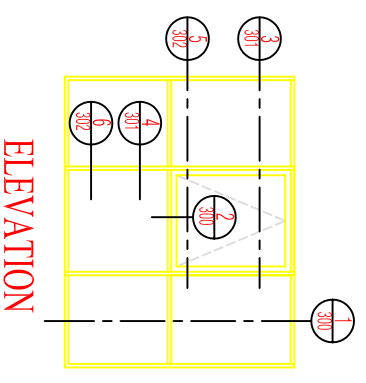


**SPECIAL SECTION DETAILS
STRUCTURALLY GLAZED WINDOWS**

DETAIL-1



DETAIL-2



SPI
Seapac Philippines, Inc.
4th Floor 115 Y - L Building
Rufino Corner Salcedo Street,
Legazpi Village, Makati City
Phone: (632) 892-8437
Facsimile: (632) 893-9867

Subject: 5000 SERIES - COMMERCIAL STRUCTURALLY GLAZED WDWs

Drawn by: RTA	Date:	Drawing No. 5000 / CSG / 300	REVISIONS:
Checked by: CS	Scale: 1 : 2.5	A4	-

SEAPAC PHILIPPINES, INC. THESE DESIGN DRAWING AND THE COPYRIGHT THEREIN ARE PROPERTY OF SEAPAC PHILIPPINES INC. AND MUST NOT BE REPRODUCED OR COPIED WITHOUT WRITTEN PERMISSION.